



The Buzz

*The official publication of the
Dairyland Tin Lizzies*
May 2013



Touring season has arrived!



RAMBLINGS FROM THE RUNNING BOARD

It seems like only a few weeks ago that a handful of us met for the first time at the Wisconsin Automotive Museum in Hartford and formed The Dairyland Tin Lizzies chapter of The Model T Ford Club of America. In fact it was April 8th, 2001. Back then, the Model T was largely a mystery to me and even the smallest of mechanical issues was cause for great concern. But I was part of a special group of people; a club of enthusiasts with seemingly limitless information who were willing to help and teach and get me on the road reliably and safely. They did just that. On our first overnight tour, I was sure that she would break down. But I had help. And somehow, that little car pulled through. Tough little car. Good friends. I was surprised; I was sold. In short, I was bitten by the bug.

Today we look ahead to our club's 13th season of touring in Henry's wonderful Model T. Today I look forward to each new challenge and thirst to learn more about this magnificent machine. And look! The number of Ts in our barn has increased to two! Each amazing accomplishment is a source of pride like no other and now I am helping others with their Ts to get them on the road. The wide-eyed grin of a novice T owner driving his pride and joy down the public thoroughfare for the very first time; "enjoy(ing) with his family the blessing of hours of pleasure in God's great open spaces"... Well, this is a sight to behold and can be described only as 'pure joy'.

Now, I accept the nomination for President of the club that has given me so much. I thank you for your confidence. I ask that you also please welcome Jim Hess as our Vice-President and Duane Nicholson as our Treasurer. Duane will be handling the club's finances as well as keeping tabs on the membership, as I have done for several years. If you need to submit your club dues for this year, please contact Duane. Jim Rodell, Jr., who, in 1999, convinced me that a drive in a Model T to Mickey's Frozen Custard is a good way to spend an afternoon, will stay on as club Secretary. Carol Gumbinger will continue to keep us updated as Webmaster, and my co-pilot and best friend Shelly, will stay on as Newsletter Editor.

The Dairyland Tin Lizzies was founded to be a touring club. That has indeed been our primary activity for the last 12 years and according to a recent survey that was conducted, remains what our membership wants the most. I am excited to report that we have two overnight tours on our schedule for 2013. Those of you who are lucky enough to have reservations for the upcoming & fast approaching Memorial Day Tour are in for a treat. This has been a favorite of our members since the first one was run in 2004. This year, DeWayne Fritz and Diane Scheid will lead us to beautiful Door County. Coming up later in the season, Kevin Brusio will lead the "Hodag Tour" to the Rhinelander area and the majestic North woods.

What we're a bit short on this season is 'day tours'. Duane & Nita Nicholson are doing a day tour on Memorial Day; a good opportunity to get on the road if you can't make the 'overnighter'. But we could use a couple more. I would like to invite any of our members to step up and take your Model T friends along for a drive. Anywhere is fine. Really! It doesn't have to be a 'big event'. What our members want is an excuse to get out on the road! Let's say there's a stretch of road that you enjoy taking a drive on. Well, string a couple of additional roads onto each end and call it a tour! Even if it's only a couple of hours, your fellow members will thank you, and many would prefer a shorter trip anyway. C'mon! Give it a try!

Don't forget our other upcoming activities including the 100th and final Beechwood Parade on June 9th and our first ever Summer Tin Lizzie University on June 22nd. Check 'em all out on the events page.

Take some time & take to the road. Model Ts make magic. --Pete

Upcoming Events

- May 25-27th** **Memorial Day Weekend Tour** (see attached)
Destination Door County
- May 27th** **Memorial Day Tour at Duane & Nita Nicholson's**
Arrival between 9:30-10:00 at Hwy W and Hy FF in Rochester.
We go to the local cemetery for taps and a picnic lunch at the corner church and a 25 minute parade from our house and then a trip to East Troy to a vintage ice cream shop next to the trolley museum.
- June 9th** **Beechwood Parade** (contact Shelly for details)
100th Anniversary & final parade/picnic
- June 15th** **Flea Market & Car Show** (see attached)
When: 9:00 AM - 4:00 PM
Where: West Bend Moose Lodge
- June 16th** **Wings & Wheels**
When: 10:00 AM
Where: Sheboygan County Airport
- June 22nd** **Tin Lizzie University**
What: Installation of Cartouche top on Fritz's T roadster
Why June? The top material requires warm weather.
- July 6th** **Picnic at Bunny Hill** (contact Dennis for details)
Hosted by Dena & Dennis Gorder
Where: S5753 South Shore Road, Baraboo, WI
- August 18th** **Richfield Historical Society**
Car Show & Vintage Baseball
Park opens at 10:00 AM
First game at 11:30 AM
- Aug. 31 - Sept. 2** **The Hodag "T" Tour** (see attached)
Tour Wisconsin's beautiful Northwoods
- Sept. 21, 22th** **15th Annual Richfield Thresheree** (details to follow)
When: 9:00 AM - 5:00PM

**DAIRYLAND TIN LIZZIES
DESTINATION: DOOR COUNTY**

**MEMORIAL DAY WEEKEND
MAY 25-27, 2013**



THE PLANS FOR OUR TOUR TO DOOR COUNTY ARE ALL BEING FINALIZED. AS IN PAST YEARS, WE WILL MEET AT THE KOHLER GENERATOR PLANT IN SHEBOYGAN AT 9:00AM ON SATURDAY, AND DEPART AT 9:30AM. THE TOUR ROUTE ON SATURDAY WILL HAVE A FEW SLIGHT VARIATIONS FROM LAST YEAR. OUR FAVORITE BAKERY IN KEWAUNEE HAS CLOSED. BUT REST ASSURED, WE HAVE FOUND ANOTHER GREAT BAKERY IN TWO RIVERS. WE ALSO HAVE A COUPLE NEW STOPS ON THE SATURDAY TOUR. LUNCH WILL BE IN KEWAUNEE, HOWEVER THERE ARE NOW A FEW OTHER RESTAURANT CHOICES WHICH WE WILL ANNOUNCE AT DEPARTURE. AFTER CHECKING IN AT RUNAWAY LODGE, WE WILL DRIVE TO A LOCAL PUB/DINER FOR DINNER. WE WILL RETURN TO THE LODGE FOR DESSERT AND SPIRITS.

SUNDAY'S ROUTE WILL TAKE US UP THE BAY SIDE OF DOOR COUNTY, WITH A LUNCH STOP AROUND SISTER BAY. AFTER LUNCH WE WILL TOUR BACK TO JACKSONPORT FOR THEIR MAIFEST CELEBRATION BEFORE HEADING TO A LOCAL WINERY. OUR LAST STOP OF THE DAY WILL BE A LOCAL PUB/DINER FOR DINNER, AND BACK TO THE LODGE FOR DESSERT AND BEVERAGES.

OUR TOUR HOME ON MONDAY WILL INCLUDE A STOP FOR BREAKFAST, AND OF COURSE, ICE CREAM.

IF YOU HAVE NOT MADE YOUR RESERVATION, PLEASE DO SO AS SOON AS POSSIBLE. AS OF TODAY THERE ARE ONLY 3 ROOMS AVAILABLE AND THEY ARE BEING HELD FOR DTL UNTIL MAY 1ST.

WE ARE LOOKING FORWARD TO A GREAT WEEKEND. WE HAVE ORDERED WARM AND SUNNY DAYS!

IF YOU HAVE ANY QUESTIONS, PLEASE FEEL FREE TO CALL:

**DIANE 262-339-1301
DEWAYNE 414-322-9535**

c/o Gary Beaupre

Flea Market & Car Show

100th Anniversary Kick-off Program

Saturday June 15, 2013

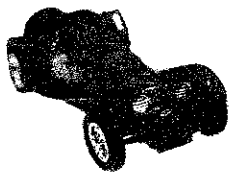
at West Bend Moose Lodge

9:00am to 4:00pm

\$30 for a 10x20 spot outside

\$45 for a 8x10 spot inside

(limited spaces inside)



\$5 for a vehicle

(if it has a motor, show it!)

There will be food and drink for sale

Call Curt to enter 338-8122

Car Show and Vintage Baseball

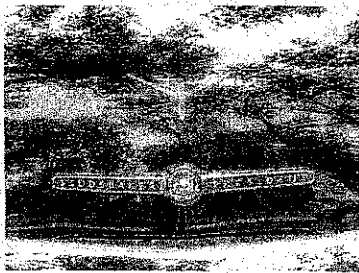
Sunday - August 18, 2013

Park open at 10:00 am, First game at 11:30 am



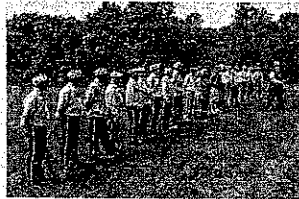
Cars will be parked in a Beautiful, natural setting in the Richfield Historical Park.

People's choice to be awarded



Cars Entrance

Pleasant Hill Road off of Hwy. 164,
One mile North of Hwy 167



Enjoy two Baseball Games, played by 1860's rules and attire.

Kids activities between games



Tours of the 1870s historic grist mill and other log/frame buildings will be available.



Food and beverages available.

For information see www.richfieldhistoricalsociety.org

or

contact Daryl Grier 262 628-4221





The Hodag “T” Tour

Labor Day Weekend – August 30th – September 2nd, 2013

Join us for a fantastic weekend tour of Wisconsin's beautiful Northwoods tree lined back roads.

Possible tour highlights include:

- Snowmobile Hall of Fame and Museum in St.Germain
- Northwoods Petroleum Museum in Three Lakes
- Kovac Planetarium in Monico
- Pioneer Park and Logging Museum in Rhinelander
- Three Lakes Winery (Cranberry wine!)

This will be a hub tour, based from the Days Inn & Suites (formerly The Claridge Motor Inn) in downtown Rhinelader. A block of 15 rooms has been set aside for our group until July 31st, but you are required to make your own reservations. Please call 715-362-7100 to make reservations, and mention The Dairyland Tin Lizzies to get our discounted room rates of \$79 per night.

Please call or email Kevin or Bob Brusio if you have any questions

FOR SALE:

DTL Logo Shirts

UltraClub® Man's & Woman's Whisper Pique Blend Polo

Description: Easy-care wonder fabric that fits your budget.



Sizes: S- XL for \$ 18.50

Larger sizes available at a slightly higher price

Key Features:

- Easy-care 60% cotton/40% polyester
- 5.6-oz. - Relaxed Fit
- Half-moon patch - Split tail
- Double-needle top-stitching

Club shirts available with the DTL logo. Price stated is for sizes up to XL. Larger sizes are available and will be slightly more. Names can be added for no additional charge.

Contact Dan at DK Stitching to order: dkstitch@tds.net

FOR SALE:

Dairyland Tin Lizzy Decals



- \$ 1.25 each (in person from Pete)
- \$ 1.75 each (if mailed)
- Please contact Duane Nicholson

AVAILABLE FOR USE:

We have a complete set of the MTFCA's "T-Tips" restoration videos on DVD for club members to use. Jack Leonhardt is the keeper. If you have a project in mind and wish to borrow one, please contact him at 920-458-7832.

Dairyland Tin Lizzies OFFICERS

President: Pete Humphrey VP: Jim Hess
Treasurer: Duane Nicholson Secretary: Jim Rodell Jr.
Webmaster: Carol Gumbinger Newsletter: Shelly Humphrey

Published in The Gippsland Times, 2nd February 1922

The Secret of the Ford

When Melbourne streets were flooded a couple of days before Christmas as the result of a phenomenal cloud burst, a good many expensive cars came to a standstill through their "maggies" getting wet. Fords, on which the magneto is highly placed, passed nonchalantly on their way, to the amusement and amazement of beholders. One of the latter explained the reason to me. "Them big cars," he said, "is worked by engines, an' when the water gets up to the engines they can't get up steam, but these 'ere Fords go by clockwork, so they don't need no steam."

I expressed my doubts.

"'S a fact!" he asserted. "The bloke wot lives across the way from me owns a Ford, an' I've often seen 'im standin' in front of 'er in the mornin's windin' 'er up